

Model 522 "FILTER-MINDER" Diaphragm-TYPE Differential Pressure Gauge

RANGE: 0-5 P.S.I.D. TO 0- 50 P.S.I.D. (.3 bar To 3.4 bar)

Gauge Features

- Range: 0-5 PSID thru 0-50 PSID (.3 bar thru 3.4 bar)
- Max. Static pressure 1000 P.S.I.G. (69 bar).
- Max. Differential pressure: 200 PSID (13.8 bar)
- Aluminum or 316 / 316L SS Gauge Body.
- Wetted 316 SS, Ceramic, & Acetal moving components.
- Available with Buna or Viton Elastomers
- ¼" FNPT Process Connections (End Connected)
- Weather-resistant construction standard.
- Dial Accuracy $\pm 5\%$ standard.
- Switch Only (No Dial) available
- 0.8" weatherproof multicolored Dial
- 2 ½" optional dial.
- Five Year Limited Warranty.



522 Family

Switch Features

- Switches are optional
- Hermetically Sealed Switch Outputs up to 3 amps in SPST configuration and up to .25 amp in SPDT configuration.
- Switch Adjustable from 40% - 95% of Range *
- Up to 240 VAC/VDC voltage ratings
- Available with Flat Pack case with Jacketed Flying Leads or with DIN IP65 / NEMA 4X Plug-in Connector.
- Optional Switch Set Feedback Decal
- Switch Location Top or Bottom
- CE Marking for Compliance with the Low Voltage Directive is available upon request.



Adjustable Flat Pack

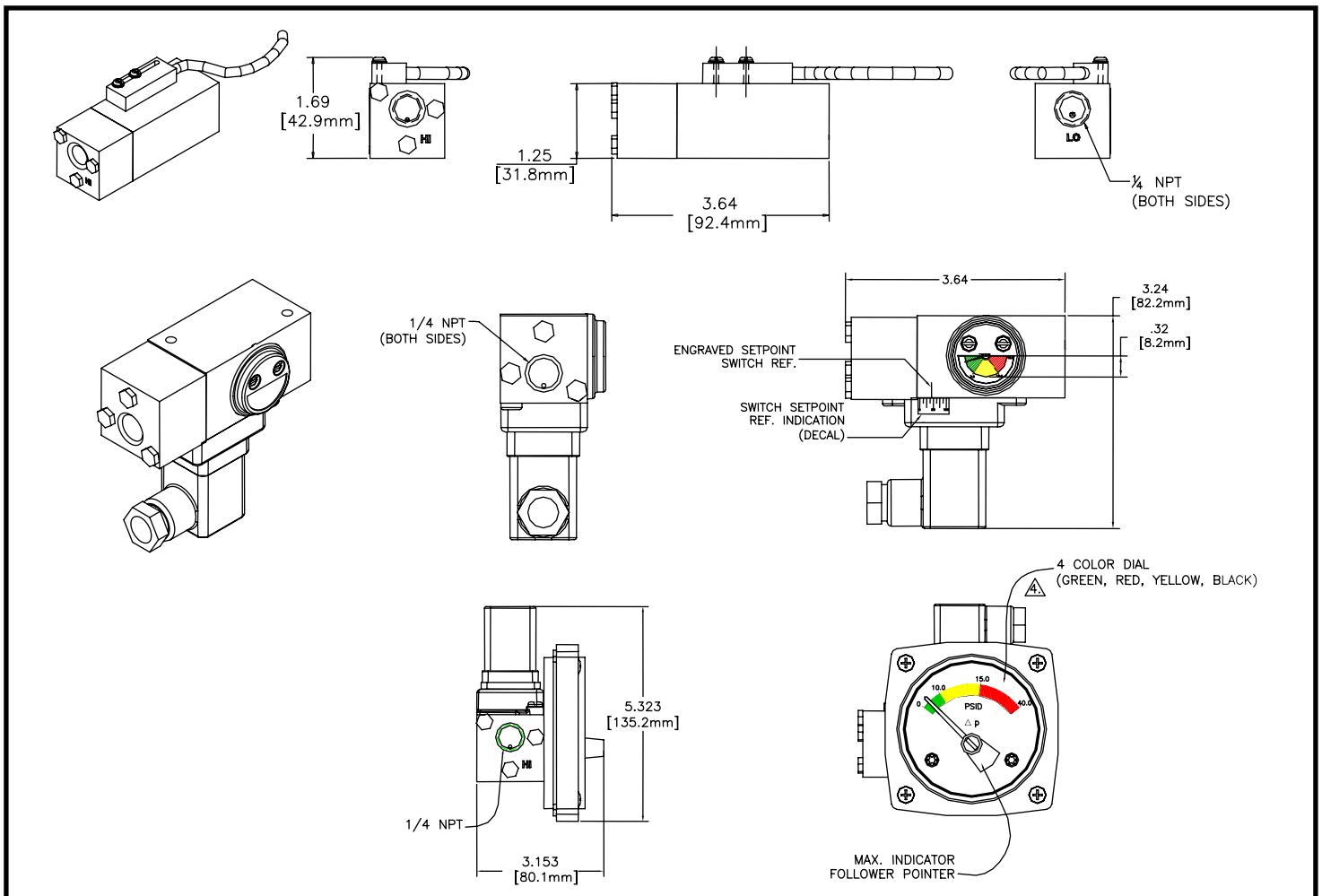
* dependent on selected switch option.

Operation: Differential pressure is sensed by the movement of a piston magnet against a calibrated spring. The gauge pointer, outside the pressure housing, follows the movement of the piston magnet and indicates differential pressure. When equipped, magnetically operated reed switches, also located outside the pressure housing, actuate dependent upon the positional relationship between the reed switch and the internal magnetic piston. The reed contact(s) can be positioned to actuate within a defined percentage of the full-scale range of the gauge.

Ordering Information:

Contact factory for desired configuration options & pricing.

Dimensional:



TEMPERATURE LIMITS: -40 °F (-40° C) to 200°F (93°C). These limits are based on the entire instrument being saturated to these temperatures. System (process) temperatures may exceed these limitations with proper installation. Contact our customer service representative for details.

STANDARDS: All Model 522 Series differential pressure gauges either conform to and/or are designed to the requirements of the following standards:

ASME B1.20.1	NACE MR0175
ASME B40.100	NEMA Std. 250
EN-61010-1	UL Std. No. 50 & 508
CSA-C22.2 No. 14	

Factory Preset of switches available at no charge (Specify Setting on the order)

The use of diaphragm seals is not recommended. Attempts to install such seals on this gauge will void the warranty

Mid-West[®] Instrument

6500 Dobry Dr. Sterling Heights, MI 48314
Ph: (586)254-6500 FAX (586)254-6509
Toll Free: (800)648-5778
E-Mail: sales@midwestinstrument.com
Web Page: www.midwestinstrument.com

