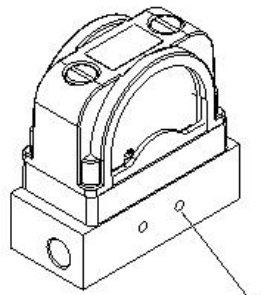
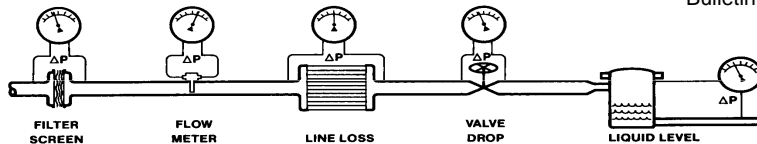
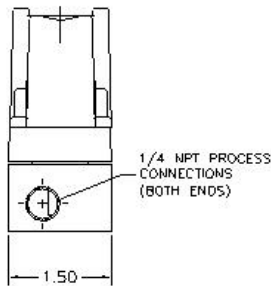
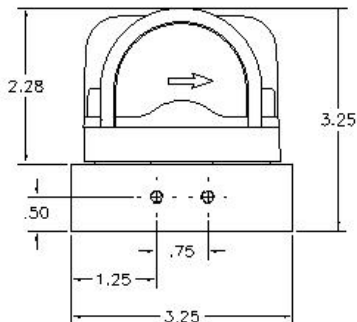


# Mid-West<sup>®</sup> Instrument



#10-32 UNF THREAD FOR MOUNTING (2 HOLES)



INDICATOR ASS'Y NO.	GREEN / YELLOW Transition Pressure (PSID)	YELLOW / RED Transition Pressure (PSID)	Rated Differential Pressure (Full Scale) (PSID)
555A – 3.5	2.0	2.5	3.5
555A – 5.0	3.0	4.5	5.0
555A – 10.0	5.0	7.5	10.0
555A – 12.0	6.0	9.0	12.0
555A – 15.0	7.5	12.0	15.0
555A – 20.0	10.0	15.5	20.0
555A – 25.0	11.0	18.5	25.0
555A – 30.0	13.0	20.0	30.0
555A – 43.0	19.5	29.5	43.0

SPECIFICATIONS:		Comments:
<b>Pressure (Ratings)</b>		
<b>Maximum Working</b>	300 PSIG	
<b>Maximum Differential</b>	150 PSID	
<b>Accuracy</b>	± 5% of Rated Differential Pressure Range	Calibrated at Color Transitions
<b>Operating Temperature (Max.)</b>	93°C (200°F)	
<b>Materials of Construction</b>		
<b>Body Material</b>	Glass Filled Nylon (GFN)	
<b>Wetted Internals</b>	Stainless Steel, Ceramic, & GFN	
<b>Elastomers</b>	Buna	
<b>Movement</b>	Magnetic Piston and Follower Pointer	
<b>Dial</b>	Plastic Lens with 3 Color Dial	
<b>INTERFACE:</b>		
<b>Process Connections:</b>	¼" FNPT End Connections. To switch HIGH and LOW pressure connections: (Remove Indicator from base and rotate 180° - Retighten plastic bolts to 20-25 inch pounds.)	Flow Direction Identified on Dial. (Arrow Points to Low Pressure Port)