

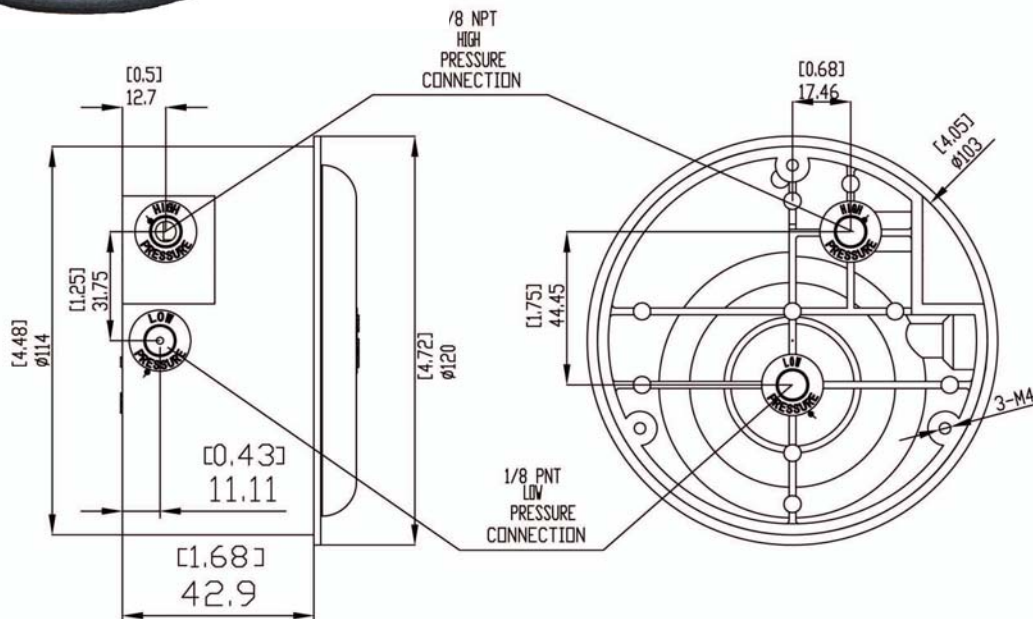
## SERIES 6000 INSTALLATION AND OPERATION



### Specifications:



- **Pressure Limits:**  
-20" Hg to 15 PSI (-0.677 bar to 1.034 bar) 35 PSI (2.41 bar)
- **Media Compatibility:**  
Air and compatible non combustible gases
- **Accuracy: Full Scale at 70°F (21.1°)**  
±4% on 0-0.25" H2O  
±3% on 0-0.50" H2O  
±2% on 0-1.0" to 0-20 PSID
- Bi-Directional:**  
±3% on 0.25"-0-0.25" H2O  
±2% on 0.50", 1.0", 2.0", 5.0", 10.0" & 15.0" H2O
- **Temperature Range:**  
20 to 140°F (-6.7 to 60°C)
- **Process Connections:**  
1/8" female NPT duplicate high and low pressure taps – one pair side and one pair back.
- **Housing:**  
Die cast aluminum case and bezel with acrylic lens
- **Weight:**  
1 lb 2 oz (510 g) 15 PSI SWP / 2 lb 2 oz (963g) 30 PSI SWP



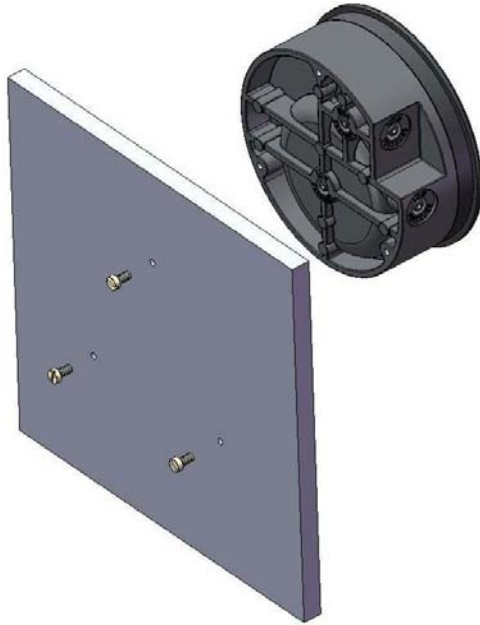
### Installation:

- Upon receipt please inspect the instrument for the intended application pressure range.
- Install the instrument in a location free from excessive vibration and where the ambient temperature will not exceed 140°F (60°C)
- All standard Series 6000 gauges are calibrated in the vertical position. To maintain the specified accuracy, the gauge must be mounted in the vertical position.

## Mounting:

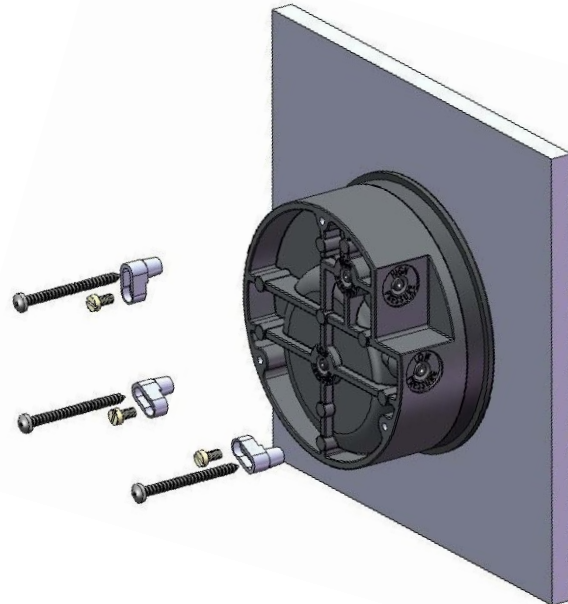
### Surface Mounting

Drill 3 holes spaced equally apart on a 4-1/16" diameter circle to match the holes on the back of the gauge.  
Secure the gauge with 3 mounting screws of suitable length provided.



### Flush or Panel Mounting

Cut an opening in the panel 4-9/16" in diameter. Put the gauge in the panel cutout, attach adapters, and use the 6 mounting screws provided to fasten the gauge in place.



## Process Connections:

### Positive Pressure Measurement:

Connect the pressure tubing to either of the "high pressure" ports and plug the one not in use. One or both of the "low pressure ports" should be open to atmospheric pressure.

### Negative Pressure Measurement:

Connect the pressure tubing to either of the "low pressure" ports and plug the one not in use. One or both of the "high pressure" ports should be open to atmospheric pressure.

### Differential Pressure Measurement:

Connect the pressure tubing with the highest pressure to either of the "high pressure" ports and plug the one not in use. Connect the pressure tubing with the lowest pressure to either of the "low pressure" ports and plug the one not in use.

## Zero Adjustment:

Zero adjustment can be made after the installation. Use the zero adjusting screw at the bottom of the cover to zero the pointer while both the high and low pressure ports are open to atmospheric pressure.