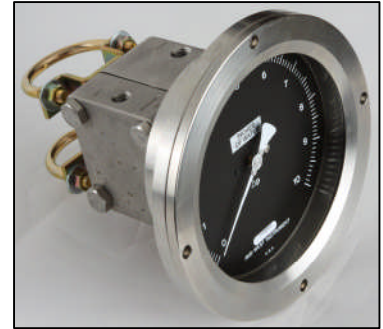


Mid-West[®] Instrument



**Now
Available!**

Model 105 **Tank Level Gauge for** **LIQUID HYDROGEN SERVICE**



No Liquid Fill required

Over-Range Protection
High over Low
and Low over High!



Mid-West Model 105 bellows design provides a simple, compact, accurate, direct-acting, low range differential pressure level indicator. Accuracy $\pm 1\%$ of Full Scale

Range Model 105: 0-10" H₂O to 0-50" H₂O (25 mbar to 125 mbar)

The Mid-West Instrument Advantage:

- Stainless steel gauge front with shatter-proof glass lens along with a stainless steel body provide superior safety and corrosion resistance.
- Dry gauge design with no internal liquid fill
 - No costly clean up from liquid fill leaking.
 - No chance of unacceptable or incompatible fill fluid being in the gauge.
 - No gauge damage/accuracy loss caused by liquid fill expansion or contraction when exposed to temperature extremes in cryogenic level applications.
- Single bellows design is more compact and light weight.
 - Substantial weight savings over competitive range gauges.
 - Can be panel mounted in a one piece panel.
 - Can be mounted on tanks using std. 2" pipe mount brackets or 3/4" pipe nipple brackets.
- Industry best lead time reduces inventory requirements
- Mid-West Instrument performs Helium leak testing on units for Hydrogen service.

Product Description:

The Model 105 design is an all-stainless steel differential pressure gauge capable of operating at low differential pressures. Safe working pressure is 1500 PSIG standard. The DPI is equipped with a Bi-directional Over Pressure Relief Valve (OPV). When the Differential Pressure exceeds 130% of the range the OPV equalizes the pressure between the Hi and Lo side's 1/4" FNPT Dual top and bottom connections are provided as standard. The DPI is also equipped with a Micro adjust pointer, If necessary the pointer can be re-zeroed. Body is made stainless steel with 316 Stainless Steel internals. Viton Seals are provided as standard with other elastomers available. Dial is 6" diameter with white lettering on a black dial.(white dial with black lettering optional) The temperature limits are rated at -40°C to 200°F. Proof pressure is Two Times working pressure at ambient temperatures.