

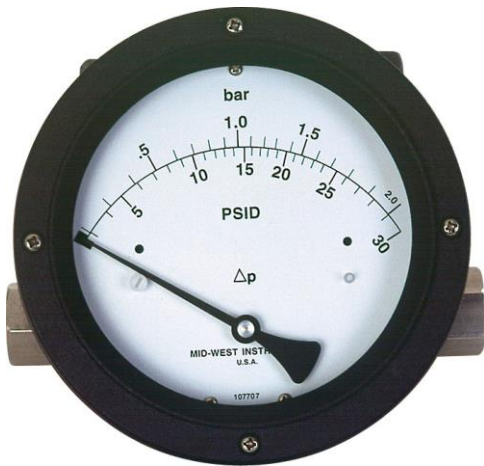
Mid-West[®] Instrument

“Piston Type” Model 220

“Hazardous Locations”

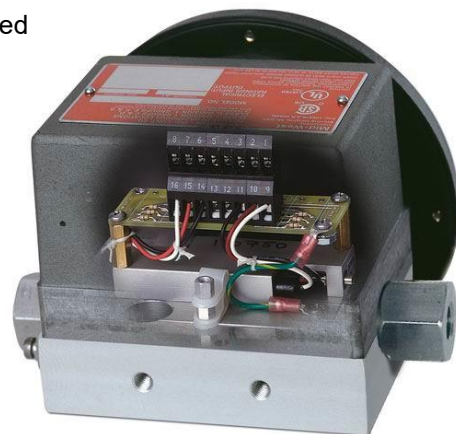


Indicating / Non-Indicating Differential Pressure Switch or Transmitter



- Low cost piston type differential pressure switch for use in measuring or controlling the pressure drop cross filters, strainers, separators, valves and pumps.
- Simple rugged compact design
- Working Pressure 4,000 PSIG (275 bar)
- Over-range protection to maximum pressure.
- 316 S.S. wetted pressure containing body assembly.
- Wetted Internals –
316 Stainless Steel and Ceramic moving components.
- Weather resistant gauge construction standard.
- Dial Size: 4-1/2” with Shatter resistant acrylic lens.
- Five Year Limited Warranty

- Field wireable terminal strip interface.
- Up to 10A 120/240 VAC switching with DPDT Relay outputs.
- Hermetically Sealed Switch Outputs up to 3 Amps in SPST configuration and up to 1 Amp in SPDT configuration
- SPST outputs available in Normally Open or Normally Closed configurations
- Up to (2) independent adjustable switch points.
- 4-20 mA Transmitter with 8-28 Vdc loop power
- 1/2” FNPT conduit cable interface with internal terminal strip
- CSA & UL Certified to US and Canadian standards.
- CSA & UL Certified:
 - Class I, Division 1 / Groups B, C & D
 - Class II, Division 1 / Groups E, F & G
 - Class I, Division 2 / Groups A, B, C & D
 - Class II, Division 2 / Groups F & G
- Certified for ATEX / IECEx
Ex db h IIB + H₂ Ex tb IIIC, IP65 (3000 PSIG SWP)
Division 2 Units are NEMA 4X



Model	Body Material	Accuracy	Min. ΔP Range	Max. ΔP Range	MWP PSIG (Bar)	Switch Options
220	316L S.S.	±3/2/3%	0-5 PSID (0-0.35 bar)	0-100 PSID (0-7 bar)	**4,000 (275)	1 or 2 switches or 4-20mA Transmitter

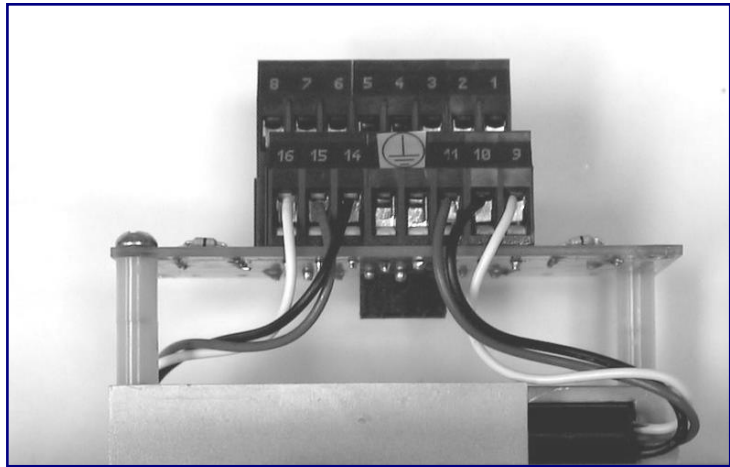
**3,000 PSIG SWP for ATEX RATED UNITS

NOTE: Due to precision sizing of the piston and the body, bore leakage across the piston will not exceed 15 SCFH air at 100 PSID at ambient conditions. **This gauge should not be used in Hazardous Environments with low process port open to atmosphere.**

“Piston Type” Differential Pressure Gauge Switch Options Model 220

The switching components are housed under a copper free Aluminum cover the combination of the gauge body and the cover make up the flame-proof seal. Electrical interface to the internal field wire terminal strip is via 1/2" NPT industry standard conduit connection located through the gauge body.

The hazardous environment indicating differential pressure switch is available with one or two hermetically sealed reed switches with optional one or two DPDT relay outputs. Each switch is independently adjustable within a defined percentage of the full scale range of the gauge and is available in SPDT and SPST (normally open or normally closed) for various load power ratings. The switches can be set to activate or deactivate on rising or falling differential pressure. If the optional relay output is specified, an input operating voltage must also be specified.



OUTPUT RATINGS (Resistive Load)

Type	SPST	SPDT	SPDT	DPDT Relay
Electrical Specification Input Option	A	A	A	B,C,D,E,F,G,H
Electrical Specification Output Option	E, F or G	H	A	R
*Power	60 W	60 W	3W	N/A
Maximum Current	3 Amps	1.0 Amps	0.25 Amps	10 Amps
Max. Volts VAC/VDC	240	240	125	277 / 30
Setting (Full Scale) **	15% to 90%	25% to 90%	10% to 90%	15% to 90%
Hysteresis Full Scale	20% / 9% (Max / Nom)	20% / 18% (Max / Nom)	10% / 6% (Max / Nom)	20% / 10% (Max / Nom)
Repeatability	1% Full Scale	1% Full Scale	1% Full Scale	1% Full Scale

* Product of the switching voltage and current shall not exceed the power rating of device

**For ranges ≥ 60 PSID, minimum adjustability = 25%

Warning: The suitability of the application and installation of this differential pressure switch is the responsibility of the end user. The applicable certifications, listings apply to the differential pressure switch only.

“Piston Type” Differential Pressure Gauge Transmitter Option Model 220

Model 220 Transmitter provides a simple low cost loop powered 8-28 Vdc two wire 4-20 mA transmitter with highly visible local display allowing for monitoring at the unit and in the control room.

The transmitter utilizes the same CSA, UL and ATEX rated sensor and explosion proof housing as on the Model 240 explosion proof switch. Although the transmitter option is not yet listed, the sensors and explosion proof housing are rated Class I, Division 1 Groups B, C & D. Class II, Division 1 Groups E, F & G and Ex db h IIB + H2, Ex tb IIIC, IP65 (3000 PSIG SWP). Each transmitter is individually calibrated to the gauge using an 11 point calibration linearization technique.

TRANSMITTER SPECIFICATIONS				
Transmitter Specifications: Comments:				
Differential Pressure Range	0-5 PSID to 0-100 PSID			
Leakage	15SCFH @ 100 PSID Max Hi to Lo		Not recommended for use with Lo port left open to atmosphere	
Pressure (Ratings)				
Max Working	3000 PSIG			
Gauge Accuracy	2%		ASME B40.100 GRADE B	
Operating Temperature (Max.)	-20°F -150°F			
ELECTRICAL:				
	Min	Typ	Max	
Transmitter Accuracy (FSR)			2%	Upper 80% of Full Scale Range
Supply Voltage (3) (Vdc)	8		28	Pin 3 Reverse Polarity Protected
Output Current (ma)				
Zero Floating (2)	4.0 – 20.1 ma	4.0 – 21.0	4.0 – 22.0	Pin 2
Zeroed (1 connected to 2)		8		
Voltage (Pin 2 to 1)	4.8		6.3	
Zero Time (seconds)	2			
Max Loop Resistance (ohms)			1000	
Max Loop Resistance Formula	$((V_s - 8) / 20) * 1000$			
INTERFACE:				
Electrical:				
Connections:	4 Position Terminal Strip; ½" NPT Conduit 1= Rtn, 2= Zero, 3 = 8-28 Vdc In, 4= Chassis		22 Awg – 12Awg Wire	
Environmental Rating:	Explosion-proof Enclosure rated Class I, Div I, Groups B, C, D; Class II, Div I, Groups E, F, & G **			
Certifications:	Ex db h IIB + H2 T6 (-30°C ≤ Ta ≤ 65°C)Gb Ex tb IIIC IP65 T85°C (-30°C ≤ Ta ≤ 65°C)Gd ATEX and IECEx			

PROOF PRESSURE: 8,000 PSI. (6,000 PSI for Transmitter)

TEMPERATURE LIMITS: -40°F (-40°C) to +185°F (+85°C)– For electrical Input Options A in combination with electrical output options A, E, F, G & H. These limits are based on the entire instrument being saturated to these temperatures. System (process) temperatures may exceed these limitations with proper installation. Contact our customer service representative for details.

-40°F (-40°C) to +160°F (+70°C) – For output option R (Relay Output)
-20°F (-30°C) to +150°F (+65°C) – For output option 4-20 mA Transmitter

STANDARDS: The Model 220 Series differential pressure gauge either conforms to and/or is designed to the requirements of the following standards:

ASME B1.20.1	NEMA Std. No. 250
ASME B40.100	SAE J514
CSA-C22.2 No. 14, 25 and 30	EN60079-0, EN60079-1 & EN13463-1
UL Std. No. 50, 508, 698, and 1203	IEC 60079-31

Model 220 - continued

7	"MODEL 220" ELECTRICAL CONFIGURATIONS (T6 Temperature Class unless specified)
A	One (1) Control switch in NEMA-4X enclosure (1) (6) (8)
B	Two (2) Control switches in NEMA-4X enclosure (1) (6) (7) (8)
J	One (1) Control switch in NEMA 7 (Explosion Proof Enclosure) (2)
K	Two (2) Control switches in NEMA 7 (Explosion Proof Enclosure) (2) (7)
R	One (1) Control switch in Ex d Enclosure (CE marked) ATEX / IECEx (2) (9)
S	Two (2) Control switches in Ex d Enclosure (CE marked) ATEX / IECEx (2) (7) (9)
T	4-20 mA Transmitter in NEMA7/EEExd (Explosion Proof Enclosure) (9) <i>(Temperature Limits -20°F to +150°F)</i>
Z	Special (10)
8	"INPUT OPTIONS" ELECTRICAL SPECIFICATIONS (Select (1) input and (1) output option)
A	No Input power for reed outputs A, E, F, G & H
B	5/6 VDC
C	12 VDC
D	24 VDC
E	48 VDC
F	24 VAC
G	120 VAC
H	240 VAC <i>(T4-ATEX; T4A-NORTH AMER.) TEMP CLASS</i>
T	8-28 Vdc Loop Power (Option T only)
"OUTPUT OPTIONS" ELECTRICAL SPECIFICATIONS (Resistive Load) (3)	
A	SPDT, 3W, 0.25 Amp., 125 VAC/VDC <i>(Switch Adjustable 15-90% of full scale ascending)</i>
E	SPST, 60W, 3.0 Amp., 240 VAC/VDC <i>(Normally Open) (Switch Adjustable 15-90% of full scale ascending)</i>
F	SPST, 60W, 3.0 Amp., 240 VAC/VDC <i>(Normally Closed) (Switch Adjustable 15-90% of full scale ascending)</i>
G	SPST, 60W, 3.0 Amp., 240 VAC/VDC <i>One (1) Normally Open, One (1) Normally Closed</i> <i>(B, K, & S Electrical Configurations only) (Switch Adjustable 15-90% of full scale ascending)</i>
H	SPDT, 60W, 1.0 Amp., 240 VAC/VDC <i>(Switch Adjustable 25-90% of full scale ascending)</i>
R	DPDT, Relay, 10A @ 30 VDC, 120/240 VAC <i>(Switch Adjustable 15-90% of full scale ascending) (8) (10)</i>
T	4-20 mA Transmitter in general purpose enclosure, 3rd Party Certified Division 2 Hazardous Locations <i>with Terminal Strip / 1/2" FNPT Conduit Connection (±2% accuracy from 20-100% of full scale ascending)</i>
Z	Special (Contact Factory)
(1) Complete Assy. 3rd Party Certified . Rated Class I, Div II, Groups A, B, C & D; Class II Div II Groups F&G <i>(R output excluded)</i>	
(2) Complete Assy. 3rd Party Certified . Rated Class I, Div I, Groups B, C & D; Class II Div I Groups E, F&G	
(3) For output options A through H, the product switching voltage and current shall not exceed power rating.	
(6) Enclosure Type 4/4X	
(7) For electrical configuration B, K & S, SPDT relay output only	
(8) Electrical configuration A & B in combination with Output Option R is not rated for Hazardous Locations	
(9) Atex / IECEx Rated CE marked Ex db h IIB + H ₂ , Ex tb IIIC, IP65 (3000 PSIG SWP) KOSHA CERTIFIED	
(10) For Electrical configurations: B, K, & S, you must use SPDT relay output only.	

Factory preset switches at no charge (Specify Setting)

MID-WEST INSTRUMENT has been serving a variety of industries (Power, Chemical, Petro-Chemical, HVAC, Water Filtration etc...) for over 50 years. Over 700,000 piston type units have been produced bearing the Mid-West name or private branded for our OEM customers!

Mid-West understands that in today's demanding environment, flexibility, quick response time and the ability to ship most of our product line in 2 weeks or less is essential to our customers. Standard configurations can be customized and modified to suit our customer's needs for ease of installation or retrofit.

If you are in need of additional information please visit our web site at www.midwestinstrument.com or contact us toll free at **1-800-648-5778** and one of our knowledgeable sales coordinators will be happy to assist you...